



Repülésmeteorológia katoná szemmel

Tuba Zoltán százados

MH GEOSZ MTO



- Miért?
- Mivel?
- Hogyan?



Miért más katona szemmel?

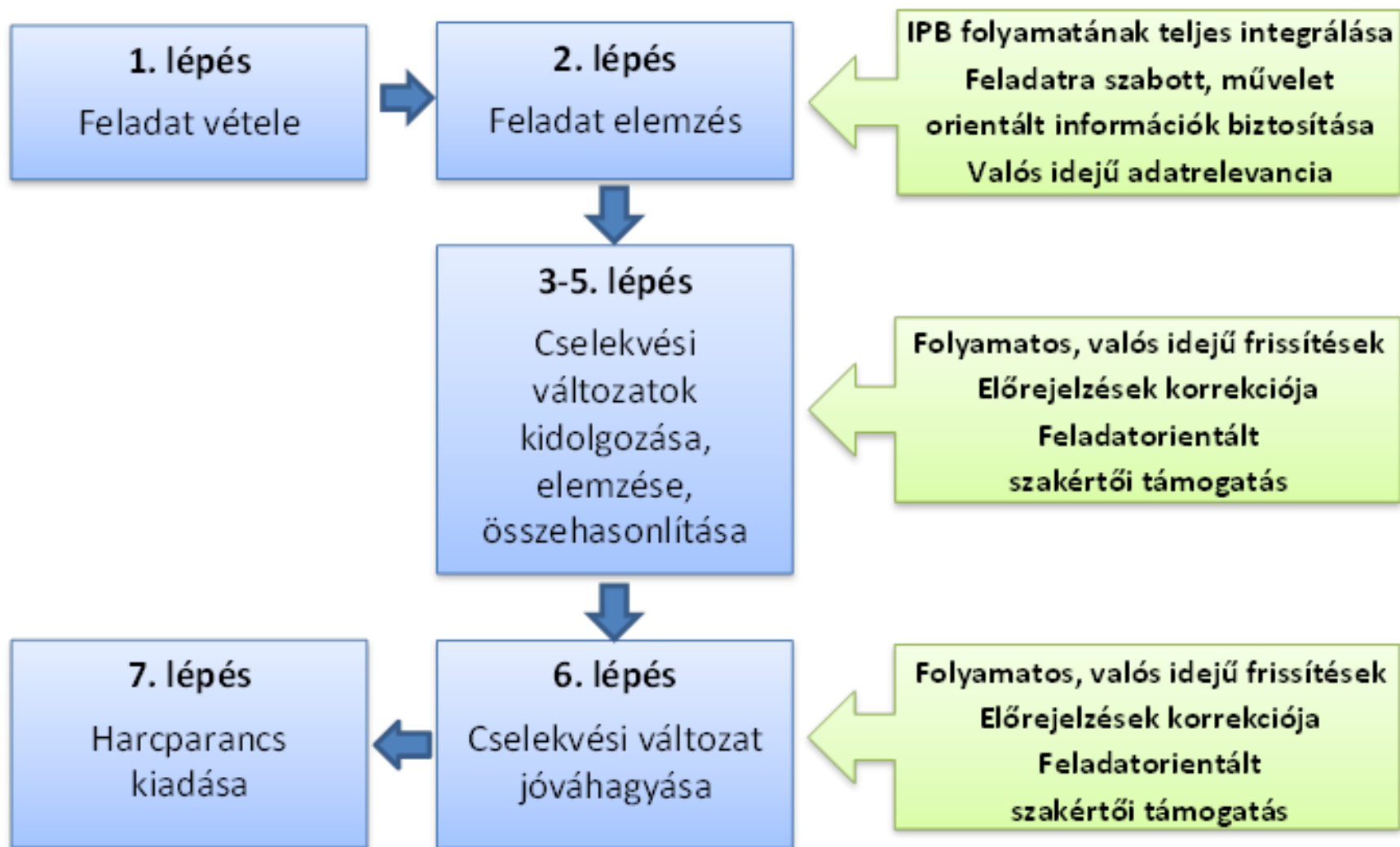
Első közelítésben a válasz:

Mert mások a feladatok, mások a felhasználók.



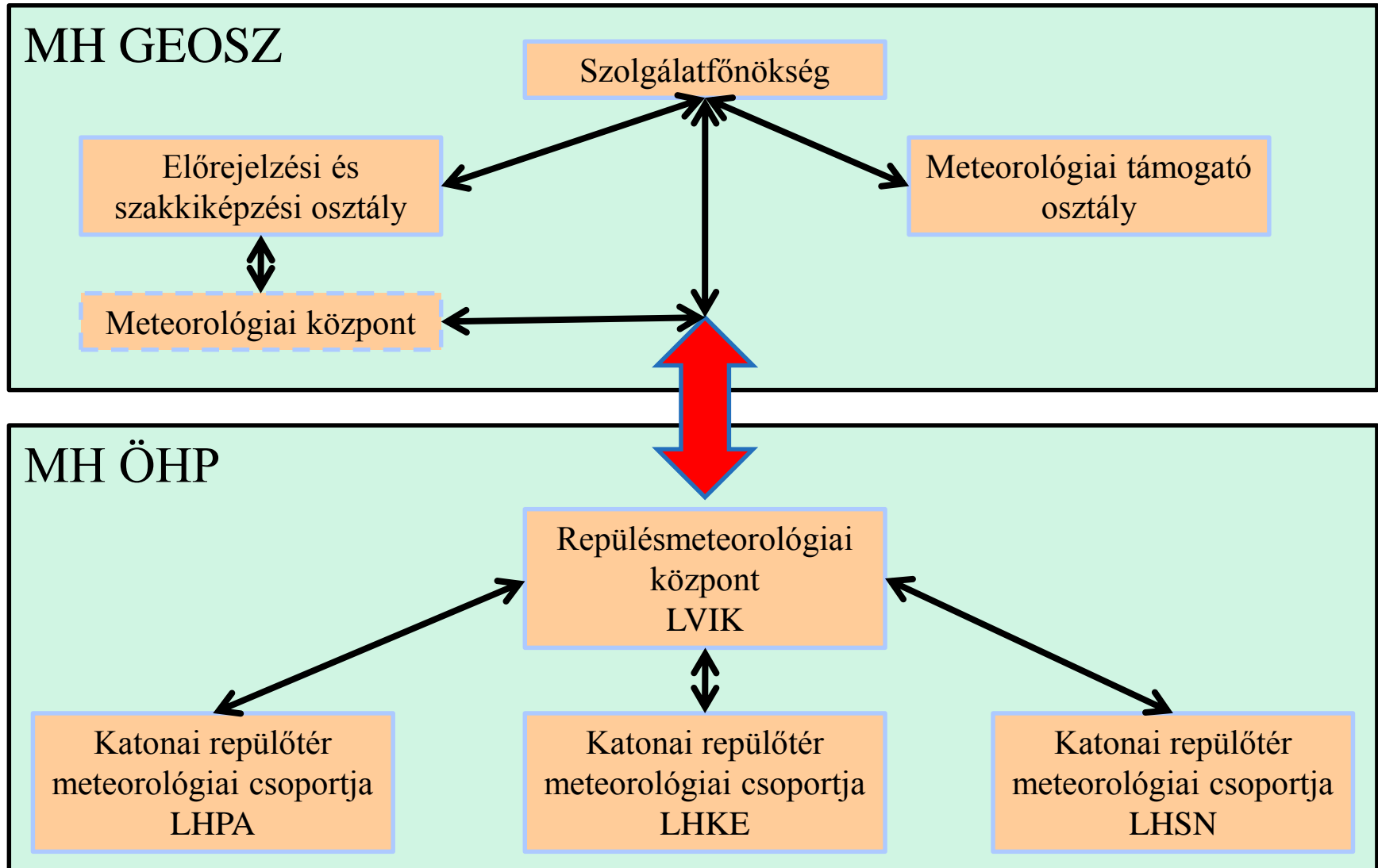


Miért más katona szemmel?





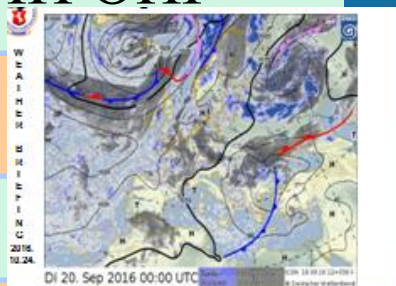
Milyen erőforrások, eszközök állnak rendelkezésre?



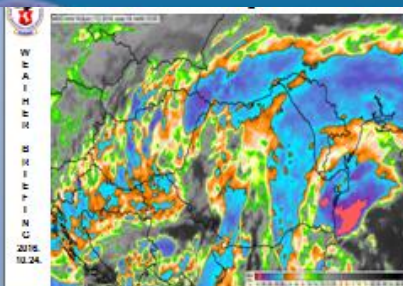


Hogyan történik a gyakorlatban?

MH ÖHP



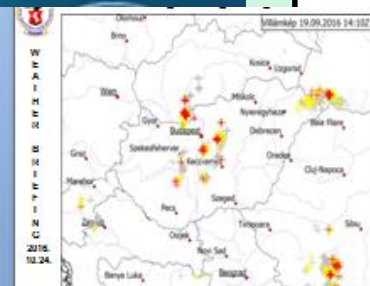
2



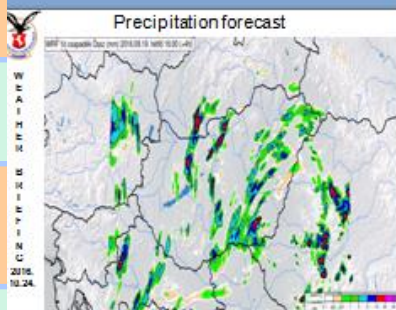
3



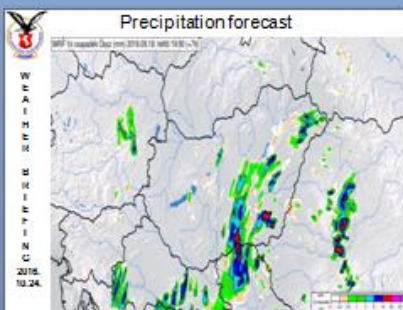
4



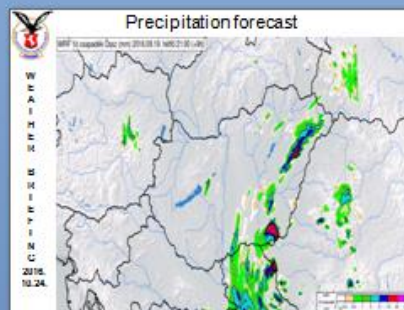
5



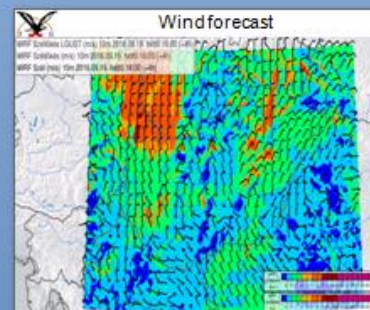
8



9



10



11

WEA I H E H E R
S H I E P I N C
2016. 10. 24.

TAF

```
TAF LHMZ 161102Z 161218Z 3000KT 9999 SCT030 BKN060
PROB40 TDPKO 161216Z 161218Z 1400KT 9999 SCT030 BKN060
SC7000CB BKN030CU=
TAF LHMZ 161102Z 161218Z 04000KT 9999 SCT030 BKN060
TDPKO 161216Z 0000Z QIRA SC7000CU BKN060
PROB30 TDPKO 161218Z 161220Z 2000Z TIRA SC7010CB BKN060
BCCMG 161018Z 160120Z
TAF LHMZ 161102Z 161201Z 3001KT 9999 SCT010 BKN200
TDPKO 161216Z 3001G60KT
TDPKO 161030Z 0000Z QIRA SC7010CU BKN060
BCCMG 200030Z CAVOK
TDPKO 200030Z 3001G60KT
```

WEA I H E H E R
S H I E P I N C
2016. 10. 24.

TAF 2

```
TAF LHMZ 161102Z 161201Z 0000KT 9999 SCT030 BKN060
TDPKO 161216Z 161220Z 1400KT 9999 SCT030 BKN060
BCCMG 161216Z 1600KT
BCCMG 200030Z CAVOK
TAF LHMZ 161102Z 161218Z 02000KT 9999 -RA FDN010 SCT030 OVC060
TDPKO 161216Z 161220Z 1400KT 9999 -RA FDN010 SCT030 OVC060
BCCMG 161218Z 1600KT BKN060
BCCMG 161218Z 1600Z TIRA QIRA BKN010 SCT010CB
OVC030=
TAF LHMZ 161102Z 161218Z 1401G60KT 9999 SCT030 BKN060
TDPKO 161216Z 1600Z QIRA BKN010CB
PROB30 TDPKO 161216Z 1600Z TIRA
BCCMG 161018Z 160120Z
TAF LHMZ 161102Z 161218Z 3001G60KT 9999 SCT030 BKN060
TDPKO 161216Z 3001G60KT
TDPKO 161030Z 0000Z QIRA SC7010CU BKN060
BCCMG 200030Z CAVOK
```

WEA I H E H E R
S H I E P I N C
2016. 10. 24.

MCTRAITMA
JET-

FL300		040/004		
FL200	-10 QFL 655	020/008		
FL100	040 FE 007	016/010		
FL100		020/018		
3000 FT		026/014		
3000 FT		036/017		
3000 FT		036/021		
1000 FT		030/023		
Z	16	18	21	16 00 UIC KI

WEA I H E H E R
S H I E P I N C
2016. 10. 24.

TRA 23-32-33

FL300		086/012		
FL200	-10 QFL 655	076/004		
FL100	040 FE 007	020/008		
FL100		046/014		
3000 FT		036/017		
3000 FT		040/018		
3000 FT		036/018		
1000 FT		030/018		
Z	16	18	21	16 00 UIC KI

tiszt

Gyakorlat vezetés



Köszönöm a figyelmet!